

BlazeVideo TV Recorder Manual

Table of Contents

I . Overview	2
1.1 Introduction	2
1.2 Features	2
System Requirements.....	3
II . Appearance & Men.....	4
III. Operation Guide	6
3.1 Watch TV Shows	6
3.1.1 Watch DTV programs.....	6
3.1.2 Watch DVB-S TV programs	9
3.1.3 Watch Digital Teletext	13
3.1.4 Listen to Digital Radio	13
3.2 Record TV Show	14
3.2.1 Record TV show	14
3.2.2 Create TV Recording Schedule Task.....	14
3.3 Convert or Edit Converting TV Shows.....	16
3.3.1 Convert recording TV shows.....	17
3.3.2 Edit TV Recording File	19
3.3.3 Download YouTube videos	26
IV. Settings	26
4.1 DTV Setting	27
4.2 Record Setting.....	28
V . Technical Support	29
5.1 Troubleshooting.....	29
5.2. Contact Support.....	29

BlazeVideo, Inc.

Tel: +86-755-26509948 Fax: +86-755-26503188 Website: <http://www.blazevideo.com> Address: Room 202, Section A, Shennan Garden Building, Hi-tech Industrial Park, Nanshan District, Shenzhen, P.R.C. 518057

I . Overview

1.1 Introduction

BlazeVideo TV Recorder is a full-featured and easy to use HDTV player software, combining HDTV playback, FM receiving, video record and recording file converter functions. You can make advantage of PC monitor's high resolution, watch, record, playback high definition HDTV program or teletext broadcast program.

BlazeVideo TV Recorder has wide compatibility, supporting most popular TV Card with BDA interface on market, runs stably and smoothly on Windows 2000/XP/Vista/7 operating systems.

1.2 Features

Full-featured Digital & Analog TV Solution:

- Watch, record, pause, replay TV show
- Intelligent EPG guides you through what and when to watch (DTV only)
- TimeShift to pause live TV shows for a break or skip commercial (DTV only)
- Remind to watch at scheduled time
- Auto & manually scan all available channels
- Freely manage favorite TV channels, rename TV channels
- Multi-channel preview to quickly access favorite programs
- Wide compatibility, support both DVB-T, DVB-S, DVB-S2, DMB-TH, AVS, CMMB, ATSC/NTSC, ISDB-T Digital TV standard and PAL, NTSC, SECAM Analog TV standard
- Support to listen to FM radio
- Support Teletext broadcasting

BlazeVideo, Inc.

Tel: +86-755-26509948 Fax: +86-755-26503188 Website: <http://www.blazevideo.com> Address: Room 202, Section A, Shennan Garden Building, Hi-tech Industrial Park, Nanshan District, Shenzhen, P.R.C. 518057

Powerful Video Converter & Editor:

- Convert all common video formats or DVD movies for playback on iPad/iPhone/iPod/PSP/3GP cell phones, etc.
- Edit videos: clip, crop, merge, watermark, subtitle
- Download YouTube videos

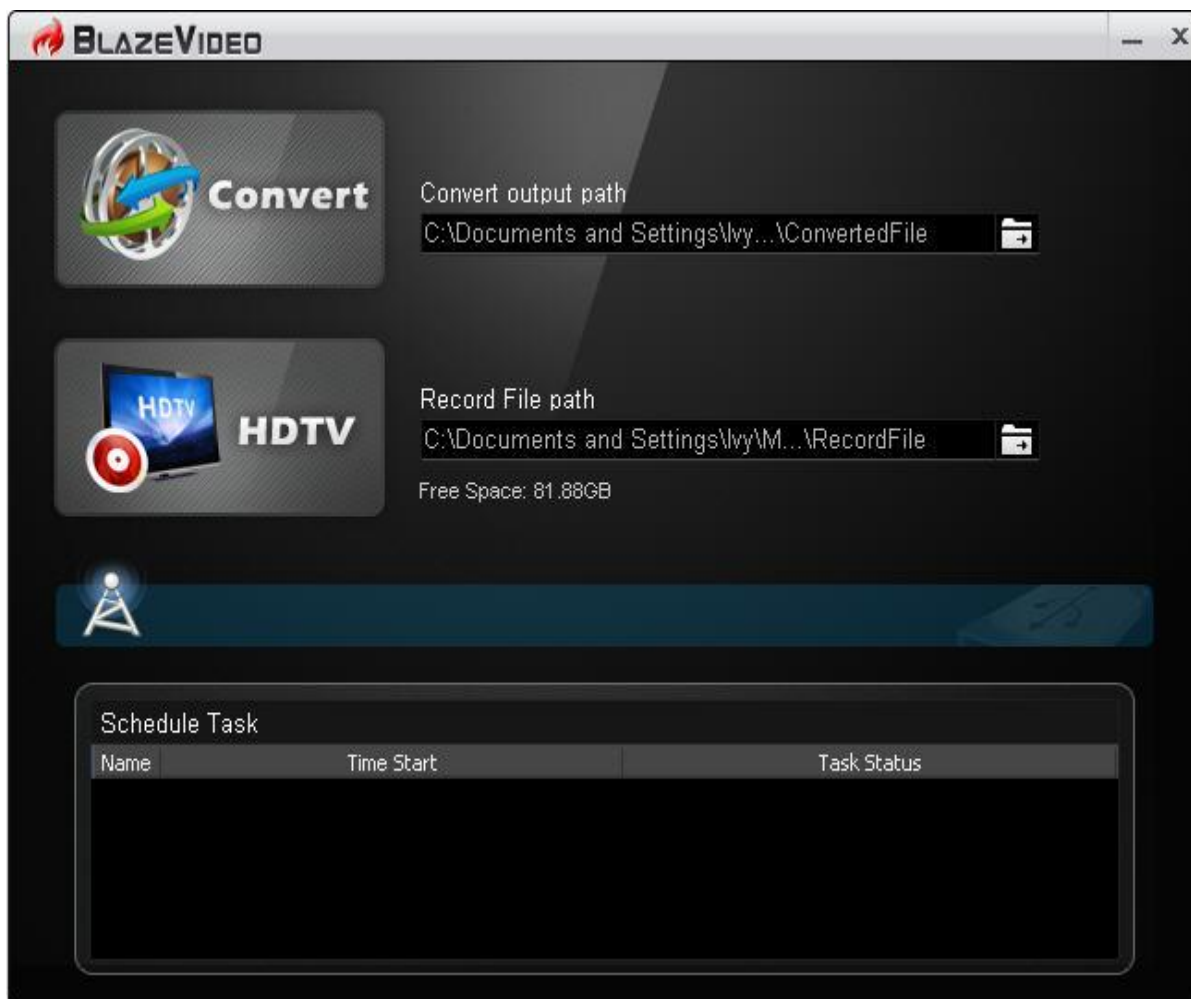
System Requirements

	Basic
CPU	Intel Celeron 600MHz or higher
System Memory	128MB RAM or higher
Operating System	Windows XP/ Vista/7
Display Card	Have 24 Bits resolution and support DirectX, 8MB Video-ROM or more
Sound Card	PCI sound cards, Integration chipset on Mother Board, USB audio devices etc. compatible with Windows and stereo speakers
Device	All DVD drives; HDTV receiver and its driver should be properly installed for HDTV playback
Hard-disk Available Capacity	At least 512 MB temporary space for TimeShifting; Large enough space for HDTV/DVD record
DirectX	DirectX 9.0 or later

BlazeVideo, Inc.

Tel: +86-755-26509948 Fax: +86-755-26503188 Website: <http://www.blazevideo.com> Address: Room 202, Section A, Shennan Garden Building, Hi-tech Industrial Park, Nanshan District, Shenzhen, P.R.C. 518057

II. Appearance & Men



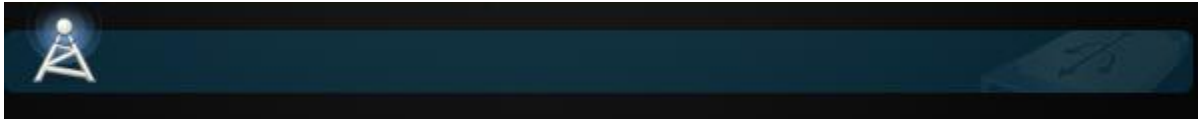
: Click to launch the best video converter program Video Magic Ultimate to convert or edit all videos and DVDs for portable devices.

BlazeVideo, Inc.

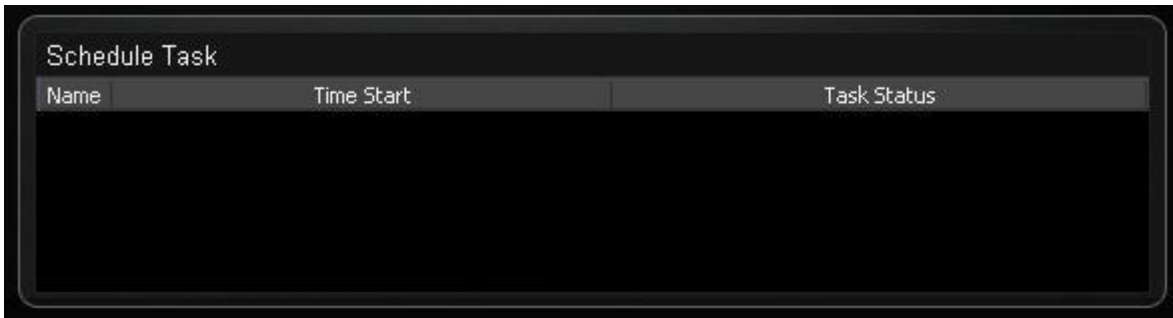
Tel: +86-755-26509948 Fax: +86-755-26503188 Website: <http://www.blazevideo.com> Address: Room 202, Section A, Shennan Garden Building, Hi-tech Industrial Park, Nanshan District, Shenzhen, P.R.C. 518057



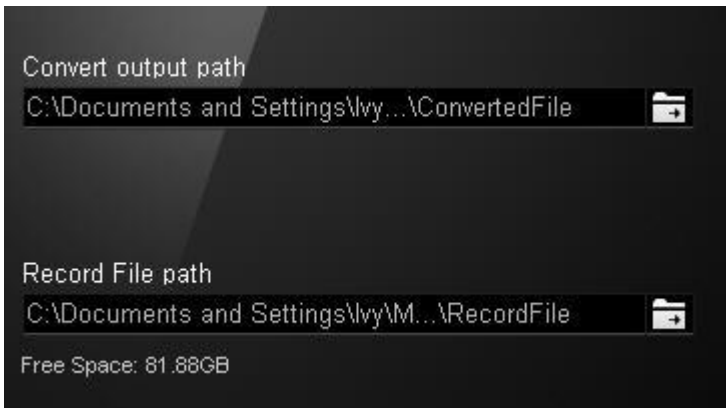
: Click to launch BlazeVideo TV Recorder to watch digital TV or analog TV shows on your computer.



: Display your USB device info connected on your computer for digital TV or analog TV programs.



: List all your TV recording schedule tasks.



: Click  to set your output folder where you can save your converted video files or TV recording files.

BlazeVideo, Inc.

Tel: +86-755-26509948 Fax: +86-755-26503188 Website: <http://www.blazevideo.com> Address: Room 202, Section A, Shennan Garden Building, Hi-tech Industrial Park, Nanshan District, Shenzhen, P.R.C. 518057

III. Operation Guide

The operation in BlazeVideo TV Recorder is very easy. Let's do it step by step!

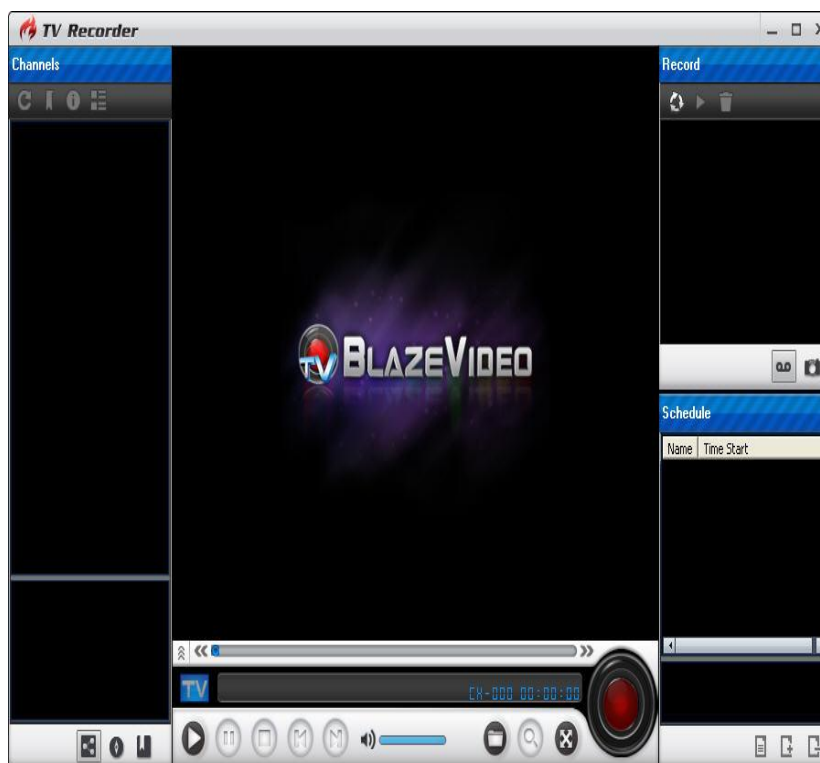
3.1 Watch TV Shows

3.1.1 Watch DTV programs

Step 1: Launch BlazeVideo TV Recorder



Click  to run BlazeVideo TV Recorder main interface.



BlazeVideo, Inc.

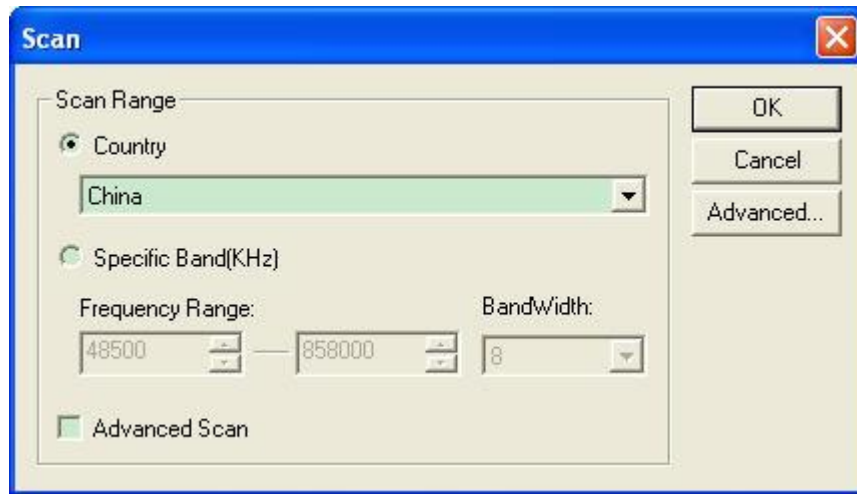
Tel: +86-755-26509948 Fax: +86-755-26503188 Website: <http://www.blazevideo.com> Address: Room 202, Section A, Shennan Garden Building, Hi-tech Industrial Park, Nanshan District, Shenzhen, P.R.C. 518057

Step 2: Scan TV channels

a. After your successful installation the drivers of the related TV device and connect the device onto your computer properly, click



the scan button, a scan box will pop up to let you scan channels:



Country: drop down to select your country or area. If your country is not in the list, please select Universal.

Specific Bank(KHz): type in your local TV frequency.

b. Keep other settings in "Advanced" as default. Click  to get started on TV channel scanning.

Step 3: Watch TV shows

EPG channel list: All your received TV channels and FM radio programs will be listed in EPG as below:



: Directly double click any TV show in the EPG (Electronic Program Guide) to watch the TV program.

Let's get a general idea on the useful button in EPG:

BlazeVideo, Inc.

Tel: +86-755-26509948 Fax: +86-755-26503188 Website: <http://www.blazevideo.com> Address: Room 202, Section A, Shennan Garden Building, Hi-tech Industrial Park, Nanshan District, Shenzhen, P.R.C. 518057



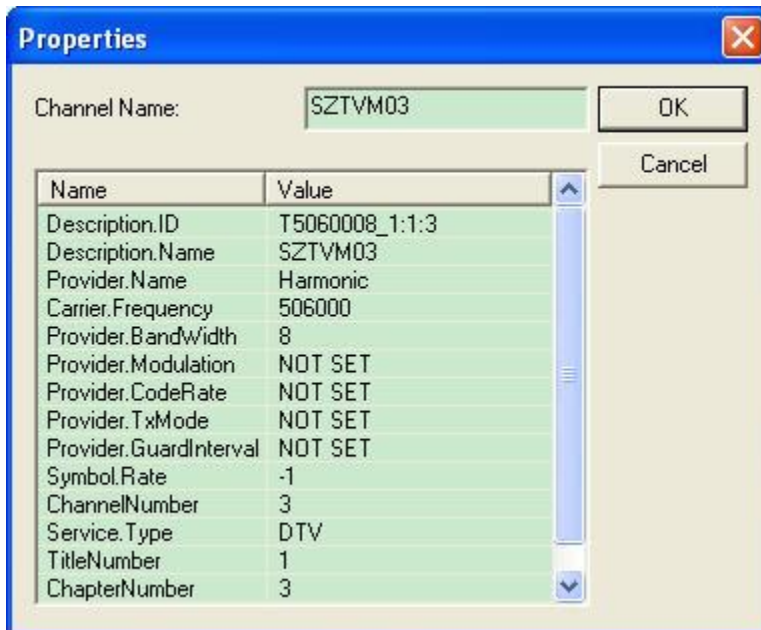
: click to fresh your received TV shows in the EPG list.



: click to add your selected TV channel into "My Favorite" list.



: click to get detailed info on the chosen TV channels, where you can also rename your TV show as below:



The Properties dialog box shows the following details for channel SZTVM03:

Name	Value
Description.ID	T5060008_1:1:3
Description.Name	SZTVM03
Provider.Name	Harmonic
Carrier.Frequency	506000
Provider.BandWidth	8
Provider.Modulation	NOT SET
Provider.CodeRate	NOT SET
Provider.TxMode	NOT SET
Provider.GuardInterval	NOT SET
Symbol.Rate	-1
ChannelNumber	3
Service.Type	DTV
TitleNumber	1
ChapterNumber	3



: click to show all your received channels



: click to show all program info.



: click to show all TV channels in your "My Favorite" list.

Other useful buttons below can make the program easy to use for you:



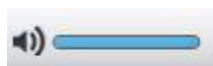
or : press to play or stop your TV show.



or : press to switch to previous or next TV show.



: click to active the timeshift feature.



: drag the bar to adjust TV sound.

BlazeVideo, Inc.

Tel: +86-755-26509948 Fax: +86-755-26503188 Website: <http://www.blazevideo.com> Address: Room 202, Section A, Shennan Garden Building, Hi-tech Industrial Park, Nanshan District, Shenzhen, P.R.C. 518057



: click to choose the media type you want to open by select in the drop-down list:



: click to open scan box to scan channels by manual.

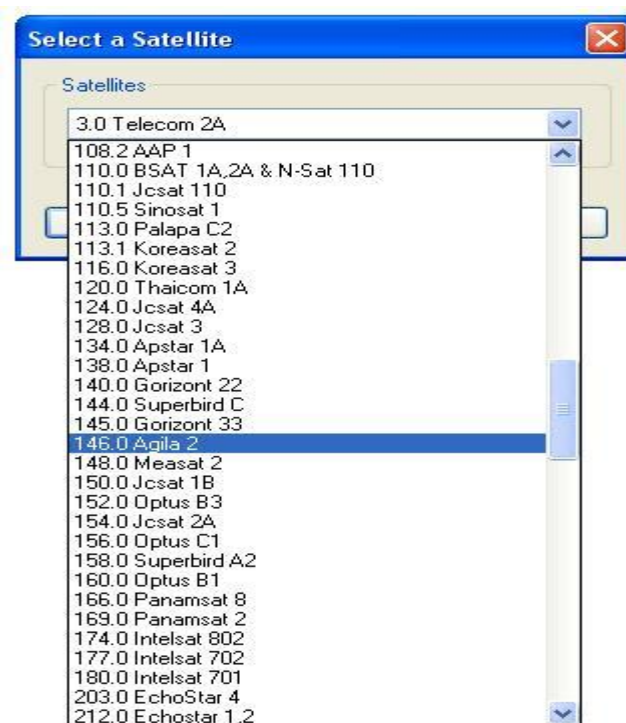


: click to watch the TV show in full screen mode.

3.1.2 Watch DVB-S TV programs

Step 1: Choose Satellite:

If a DVB-S tuner installed on your PC, when first launch BlazeVideo TV Recorder below dialog box will popup for you to choose satellite. Please select your desired satellite according to antenna's orientation, then click "OK" button.

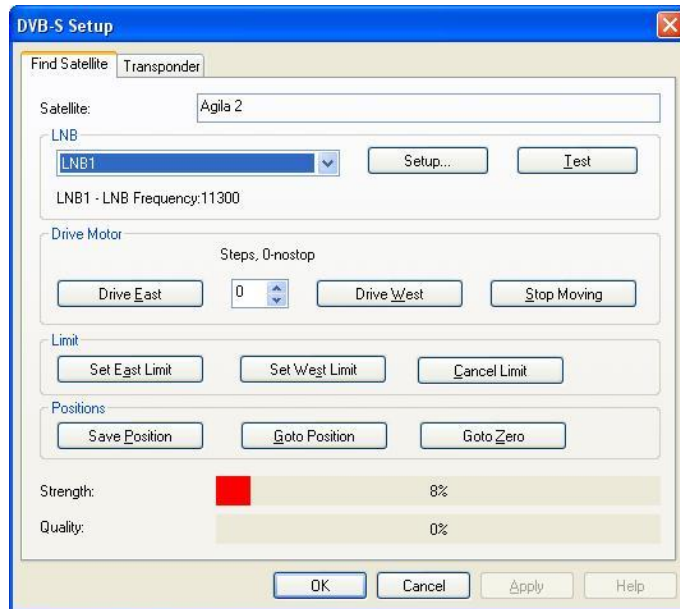


Step 2: Set LNB:

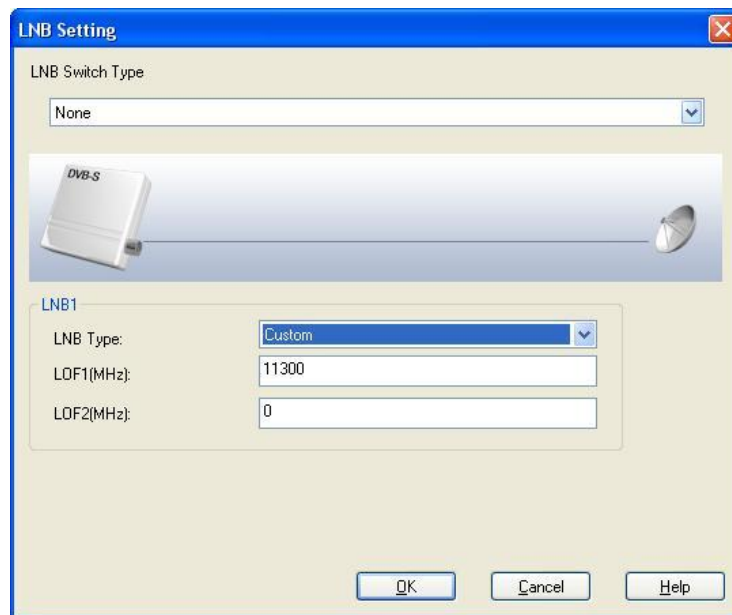
After choosing a satellite for the first time setup, below box will pop up:

BlazeVideo, Inc.

Tel: +86-755-26509948 Fax: +86-755-26503188 Website: <http://www.blazevideo.com> Address: Room 202, Section A, Shennan Garden Building, Hi-tech Industrial Park, Nanshan District, Shenzhen, P.R.C. 518057



In window above, click  to turn to box below:

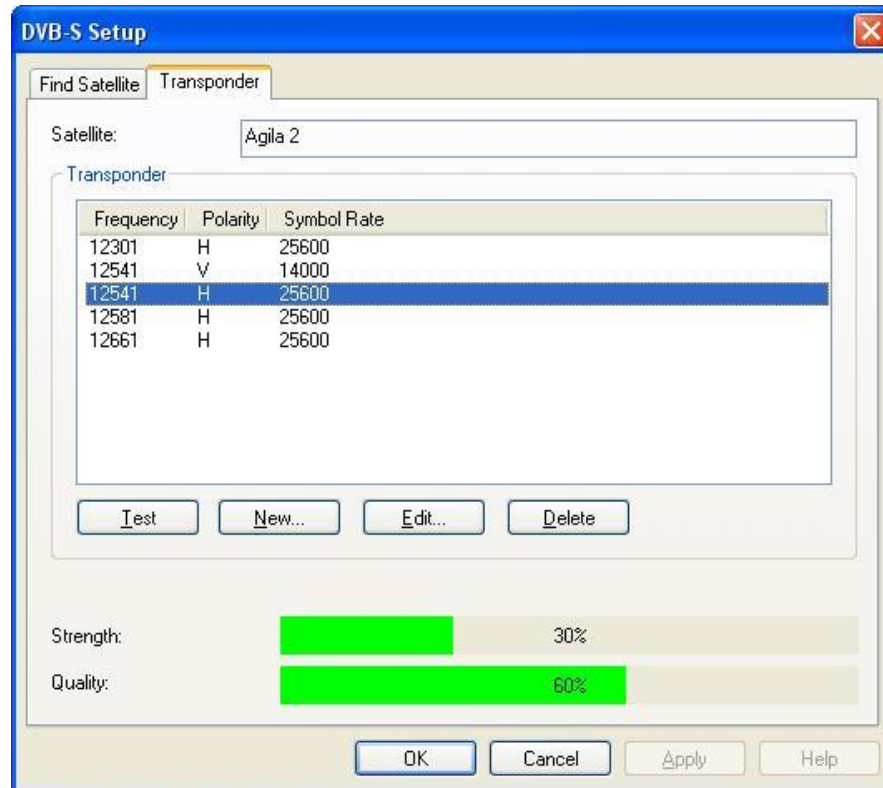


Step 3: Set Transponder:

You can access every Transponder information on the relative satellite operator's website. Look at the following:

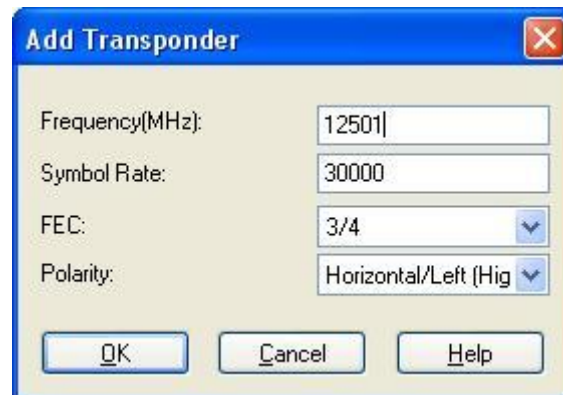
BlazeVideo, Inc.

Tel: +86-755-26509948 Fax: +86-755-26503188 Website: <http://www.blazevideo.com> Address: Room 202, Section A, Shennan Garden Building, Hi-tech Industrial Park, Nanshan District, Shenzhen, P.R.C. 518057



Test: Test the selected transponder.

New...: Click to type Frequency, Symbol Rate, Polarity and FEC. All of these parameters can be accessed in the relative website.



Edit... or **Delete**: Click to edit or delete the selected transponder.

Step 4: Search Satellite and Drive Motor:

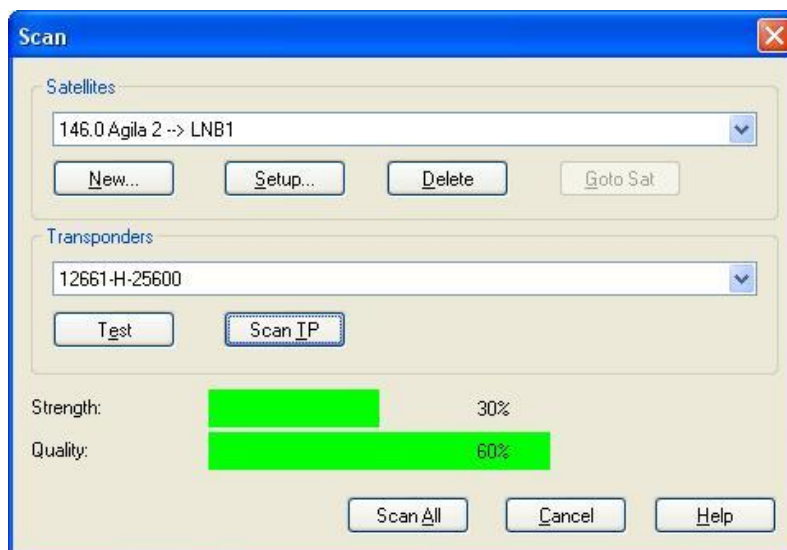
BlazeVideo, Inc.

Tel: +86-755-26509948 Fax: +86-755-26503188 Website: <http://www.blazevideo.com> Address: Room 202, Section A, Shennan Garden Building, Hi-tech Industrial Park, Nanshan District, Shenzhen, P.R.C. 518057

Before scanning channels, please make sure the satellite antenna has rightly aimed at the target satellite. The installation of polar axis supporting DiSEqC 1.2 or higher on satellite antenna is necessary, and only when the satellite supports the command DiSEqC 1.2 or higher, you can drive the motor of antenna. You can only drive the orientation angle, the polarity angle and elevation angle should be manually adjusted.

Step 5: Scan Channel:

The scan box below will appear to let you scan channels:



Satellite tab: display the binding relationship of LNB and satellite. A LNB can be bound with several satellites, but the antenna position of each satellite should be saved, thus the antenna will be rotated to the relative satellite position when switch channel between different satellites.

New...: click to add satellite.

Setup...: set LNB and transponder, to search satellite and transponder.

Delete: delete binding relationship of LNB and satellite or the added or modified transponder info.

Goto Sat: rotate antenna to the selected satellite. The satellite position should be saved in advance. Otherwise, this feature will be inactive.

Transponder tab: show all transponders supported by present LNB.

Test: test signal of the selected transponder. Click to popup box showing locked or unlocked. Signal Strength and Quality will also be shown with percent number. Green color for locked, while red color for unlocked.

Scan IP: scan the channels of selected Transponder.

Scan All: scan channels of all Transponder in satellite.

BlazeVideo, Inc.

Tel: +86-755-26509948 Fax: +86-755-26503188 Website: <http://www.blazevideo.com> Address: Room 202, Section A, Shennan Garden Building, Hi-tech Industrial Park, Nanshan District, Shenzhen, P.R.C. 518057


You can watch either digital TV show or analog TV show. When you run BlazeVideo HDTV Player for the first time, and if your PC have a TV device installed, after auto scanning all available channels, the program will auto play the first scanned channels.


In the future every time when you startup HDTV Player, HDTV Player will auto play the last channel you have viewed.


There are also below operations available for you to quickly and easily access your desired channels.

Directly Watch: In EPG window, double click a desired channel, you will directly watch this channel's program.

Switch Channel: Click  or  to freely switch to previous or next channel.

Browse Channel: Click  to open a channel list dialogue box of all the channels and your favorite channels. Here you can freely select your desired channel to watch.

Return to Last Channel: Click  to quickly access and play the last viewed channel.

Select Subtitle: Click  to select your desired subtitle.

Select Audio: Click  to select your desired audio.

3.1.3 Watch Digital Teletext

The teletext is activated only if HDTV service provider has provided such program.

Step 1: In Main Control Panel, click Subtitle button and tick "Teletext" in popup menu or in TV Advanced Panel Teletext area, click Teletext button and tick "Show Teletext" in popup menu, teletext will display on video window.

Step 2: Click  to add subtitle.

3.1.4 Listen to Digital Radio

After channel scanning finishes, the HDTV channels will be listed with the thumbnail of the current video, while the digital radio program will be listed with the default thumbnails too.

BlazeVideo, Inc.

Tel: +86-755-26509948 Fax: +86-755-26503188 Website: <http://www.blazevideo.com> Address: Room 202, Section A, Shennan Garden Building, Hi-tech Industrial Park, Nanshan District, Shenzhen, P.R.C. 518057

3.2 Record TV Show

3.2.1 Record TV show



Step 1: During TV playback, click  to get started on live recording TV show into mpg video file.



Step 2: If you want to stop the TV recording, just click .

All your recording TV files will be listed in the Recording List area:



: click to launch the built in video converting tool Video Magic Ultimate to rip the chosen recording TV files into various formats for playback on more popular portable devices.



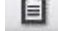
: click to delete unwanted TV recording file.



: click to clear the Record List by deleting all TV recording files.

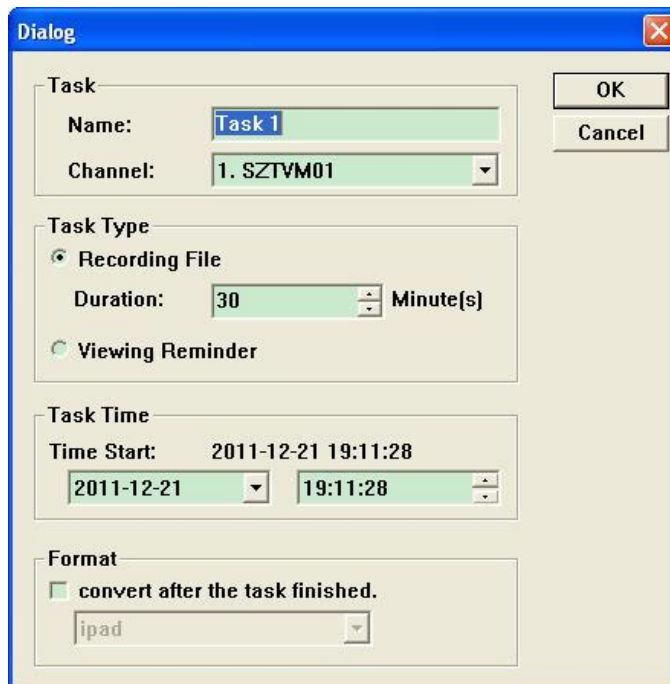
3.2.2 Create TV Recording Schedule Task



Step 1: Click  to turn to dialog below:

BlazeVideo, Inc.

Tel: +86-755-26509948 Fax: +86-755-26503188 Website: <http://www.blazevideo.com> Address: Room 202, Section A, Shennan Garden Building, Hi-tech Industrial Park, Nanshan District, Shenzhen, P.R.C. 518057



The 'Dialog' window is used to configure a task. It contains the following fields:

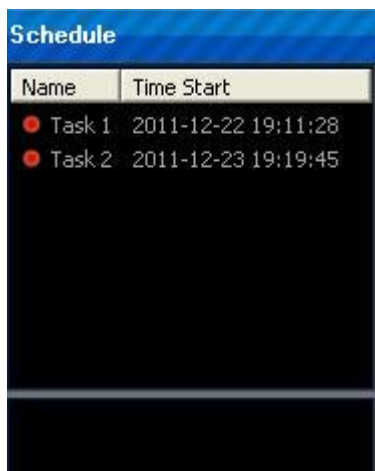
- Task**
 - Name: Task 1
 - Channel: 1. SZTVM01
- Task Type**
 - ☒ Recording File
 - Duration: 30 Minute(s)
 - ☐ Viewing Reminder
- Task Time**
 - Time Start: 2011-12-21 19:11:28
- Format**
 - ☐ convert after the task finished.
 - Format: ipad

Buttons: OK, Cancel

Step 2: Create TV recording schedule task.

Fill in items one by one: task name and channel, select task type, set task time. You can also choose to convert the TV recording files into other formats after TV recording task finishes.

Step 3: Click OK to complete the TV recording task schedule:



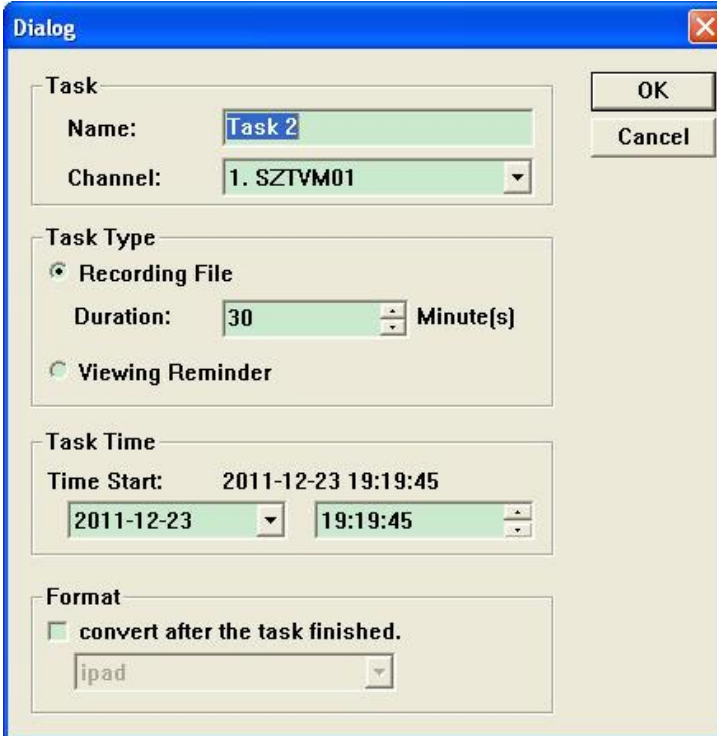
Name	Time Start
Task 1	2011-12-22 19:11:28
Task 2	2011-12-23 19:19:45



: select a TV recording scheduled task and click this "Task Modify" button, you can open task dialog as below to edit the task info:

BlazeVideo, Inc.

Tel: +86-755-26509948 Fax: +86-755-26503188 Website: <http://www.blazevideo.com> Address: Room 202, Section A, Shennan Garden Building, Hi-tech Industrial Park, Nanshan District, Shenzhen, P.R.C. 518057



: select the unwanted TV recording scheduled task and click this "Task Delete" button to delete the TV recording task from your list.

3.3 Convert or Edit Converting TV Shows

BlazeVideo TV Recorder has a special video converter included, namely Video Magic Ultimate, which enables users to enjoy the recording TV shows on portable devices.



When launching Blazevideo TV Recorder, click the button to open the built in Video Magic Ultimate program:

BlazeVideo, Inc.

Tel: +86-755-26509948 Fax: +86-755-26503188 Website: <http://www.blazevideo.com> Address: Room 202, Section A, Shennan Garden Building, Hi-tech Industrial Park, Nanshan District, Shenzhen, P.R.C. 518057



3.3.1 Convert recording TV shows

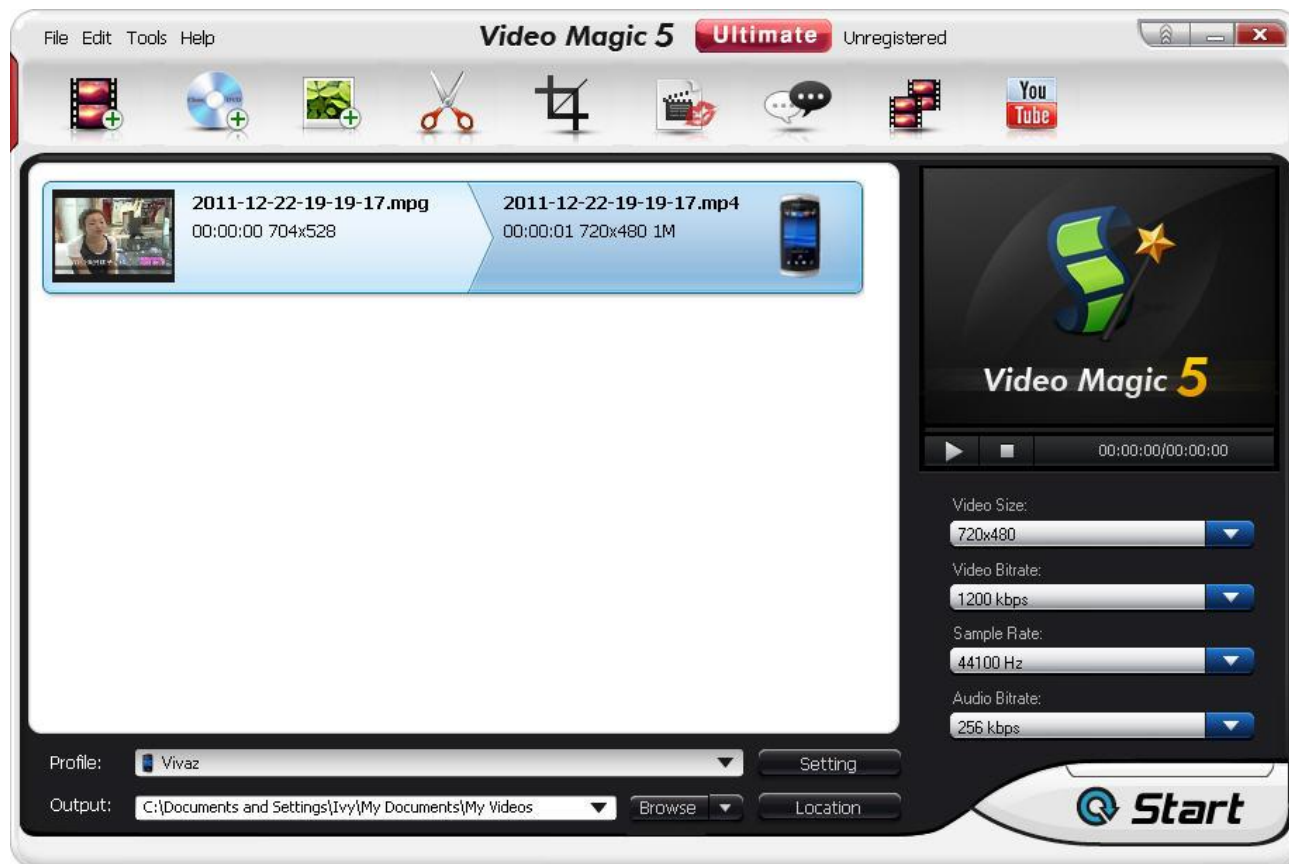
Step 1: Load TV recording file.



Click the button to load your recording file into Video Magic,

BlazeVideo, Inc.

Tel: +86-755-26509948 Fax: +86-755-26503188 Website: <http://www.blazevideo.com> Address: Room 202, Section A, Shennan Garden Building, Hi-tech Industrial Park, Nanshan District, Shenzhen, P.R.C. 518057



Step 2: Choose the output video format or output device.

In "**Profile**" tab, drop down to select your output format or device:

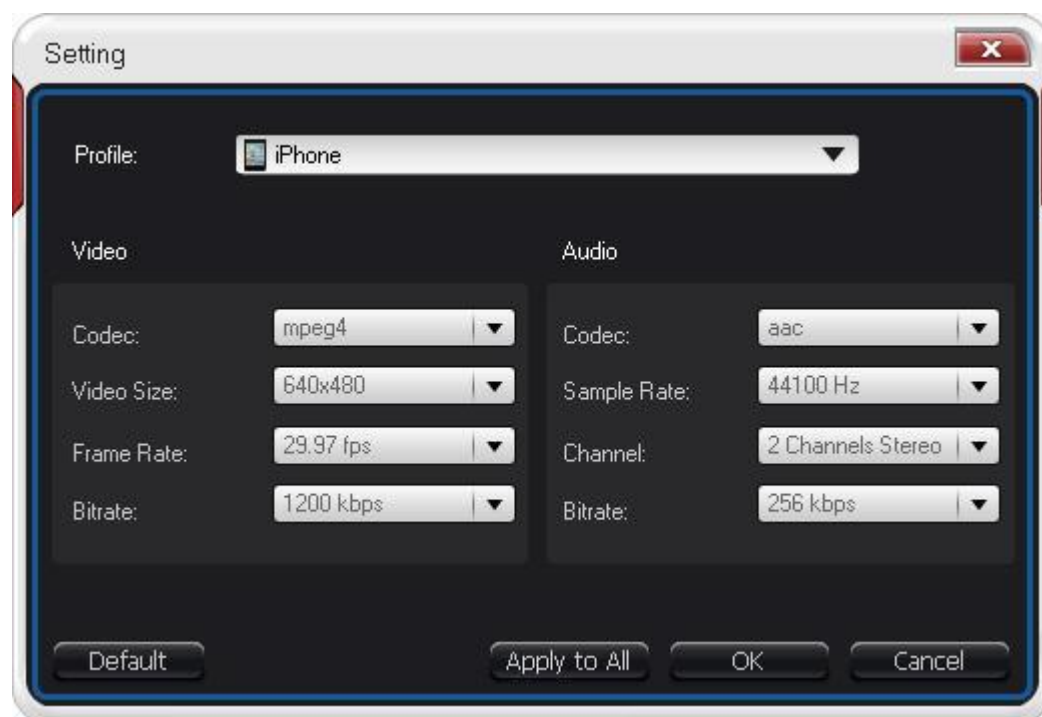


Step 3: Set video output format.

BlazeVideo, Inc.

Tel: +86-755-26509948 Fax: +86-755-26503188 Website: <http://www.blazevideo.com> Address: Room 202, Section A, Shennan Garden Building, Hi-tech Industrial Park, Nanshan District, Shenzhen, P.R.C. 518057

Click "Setting" button to pop up **Setting** box below, where you can set parameter for output video format:



Step 4: Click to begin to convert your TV recording file into various video formats.

Note: Using Vide Magic Ultimate, you can also convert DVD movies into various formats for portable devices easily.

3.3.2 Edit TV Recording File

Video Magic Ultimate offers powerful video editing features: clip, crop, merge, add watermark or subtitle.

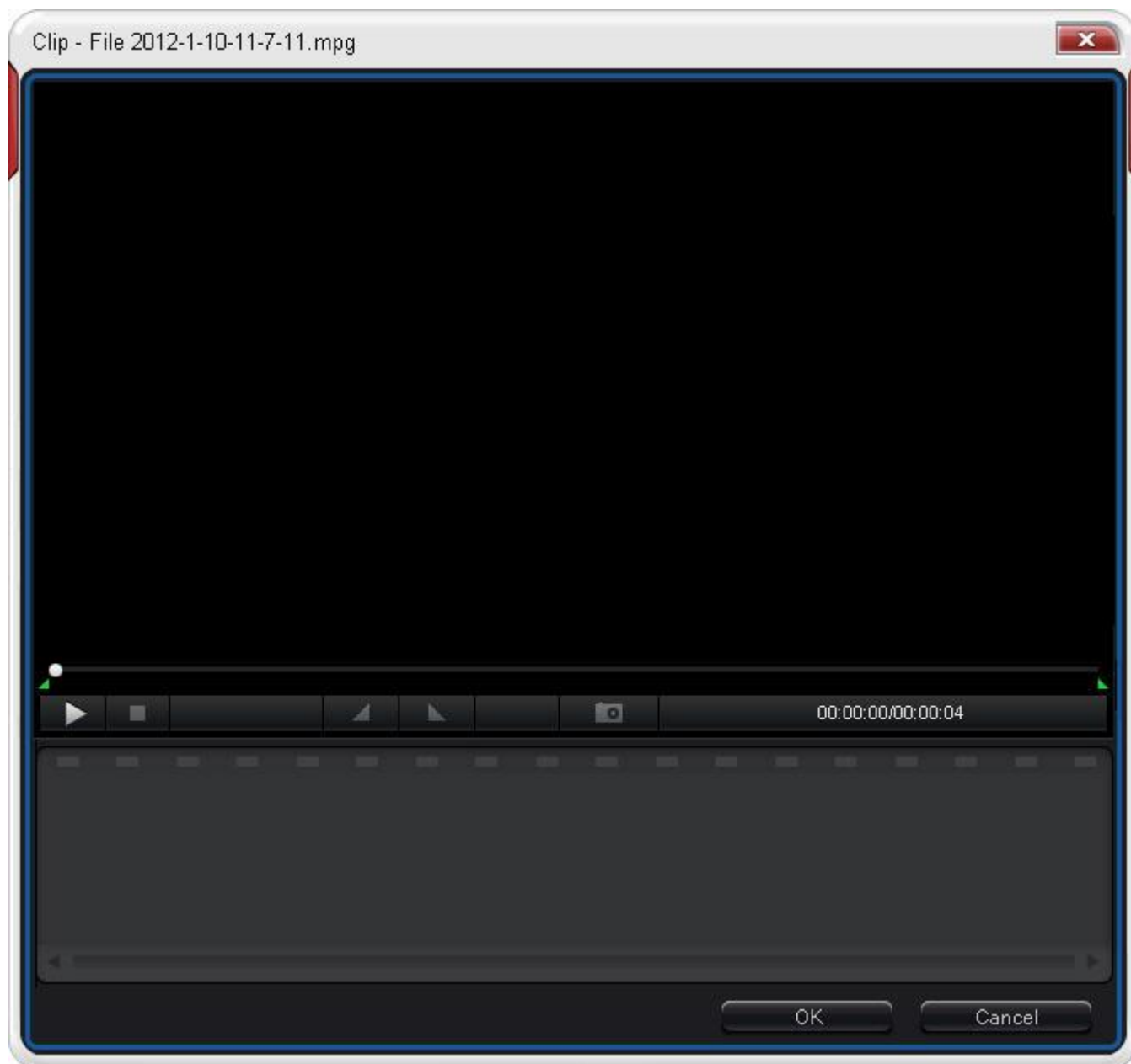
3.3.2.1 Cut out video clips





After loading your TV recording file into Video Magic Ultimate, click the button to go to window below:


BlazeVideo, Inc.


Tel: +86-755-26509948 Fax: +86-755-26503188 Website: <http://www.blazevideo.com> Address: Room 202, Section A, Shennan Garden Building, Hi-tech Industrial Park, Nanshan District, Shenzhen, P.R.C. 518057



: Click to play the recording file.

: Click to stop the playback.

: Click to begin a video clip.

: Click to end the video clip.

BlazeVideo, Inc.

Tel: +86-755-26509948 Fax: +86-755-26503188 Website: <http://www.blazevideo.com> Address: Room 202, Section A, Shennan Garden Building, Hi-tech Industrial Park, Nanshan District, Shenzhen, P.R.C. 518057

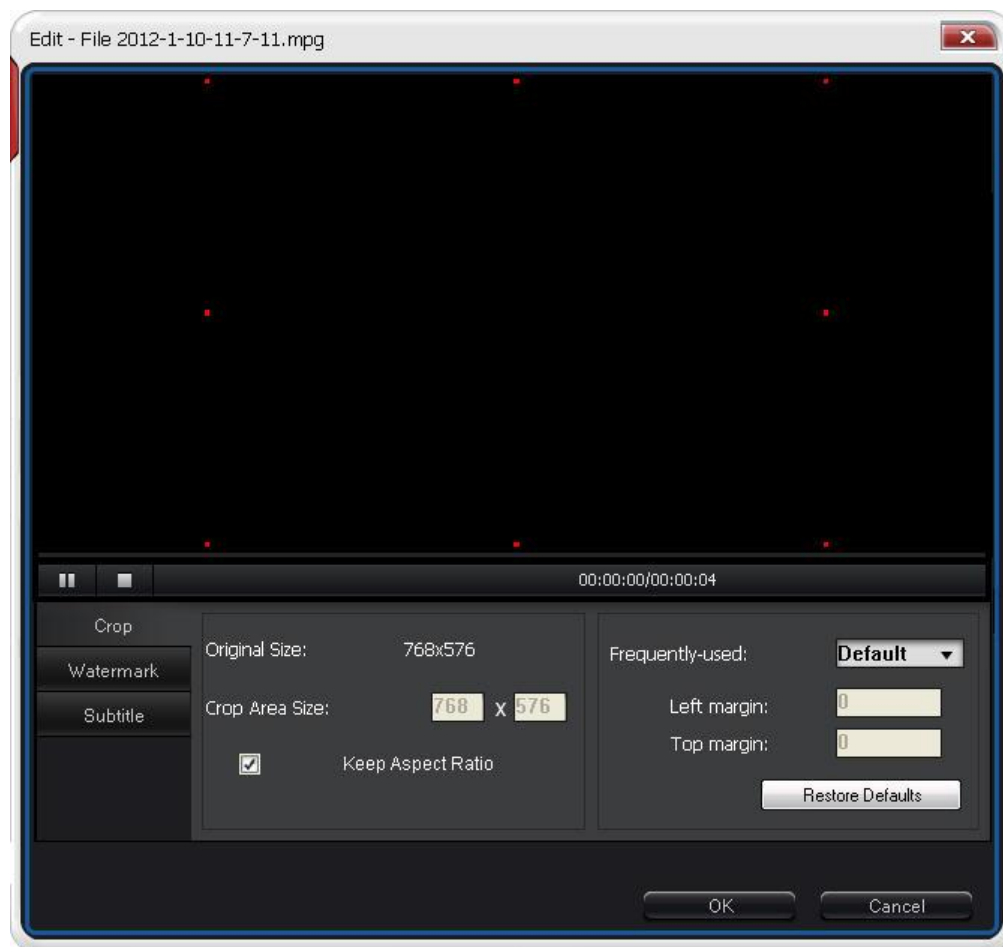


: Click to start a new clip.

3.2.2.2 Crop video



Step 1: Click the button to enter Edit window:



Step 2: Drag the 8 red points on the video screen to adjust the cropped size.

BlazeVideo, Inc.

Tel: +86-755-26509948 Fax: +86-755-26503188 Website: <http://www.blazevideo.com> Address: Room 202, Section A, Shennan Garden Building, Hi-tech Industrial Park, Nanshan District, Shenzhen, P.R.C. 518057

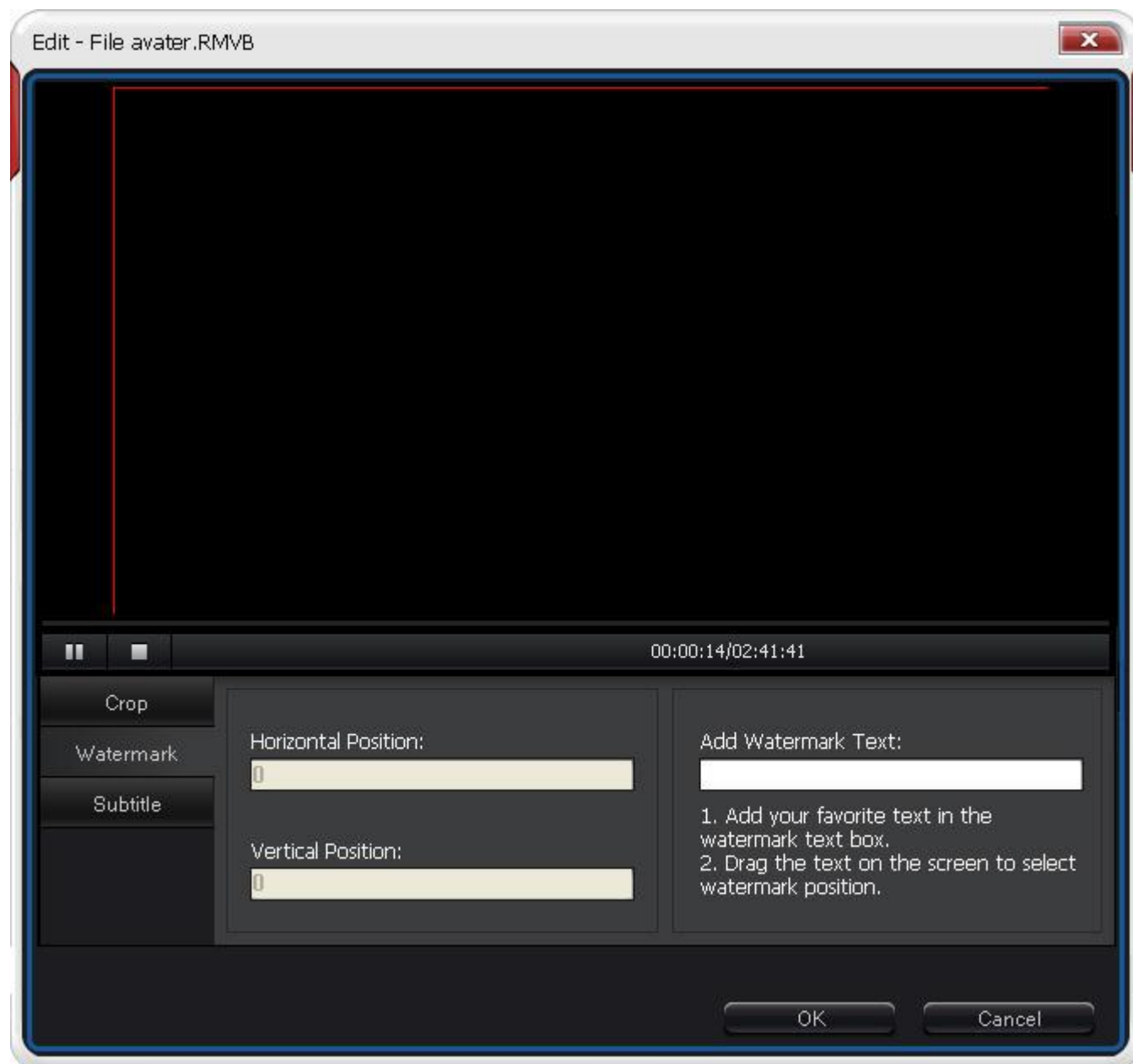


Step 3: Drop down “Frequently-used” to choose the frequency

3.2.2.3 Add watermark on video



Step 1: In the above Edit window, click “Watermark” or click the button, users are able to add watermark on videos:



Step 2: Enter your watermark text in the “Add Watermark Text” area.


Step3: Drag the watermark text on the video screen to change its position.

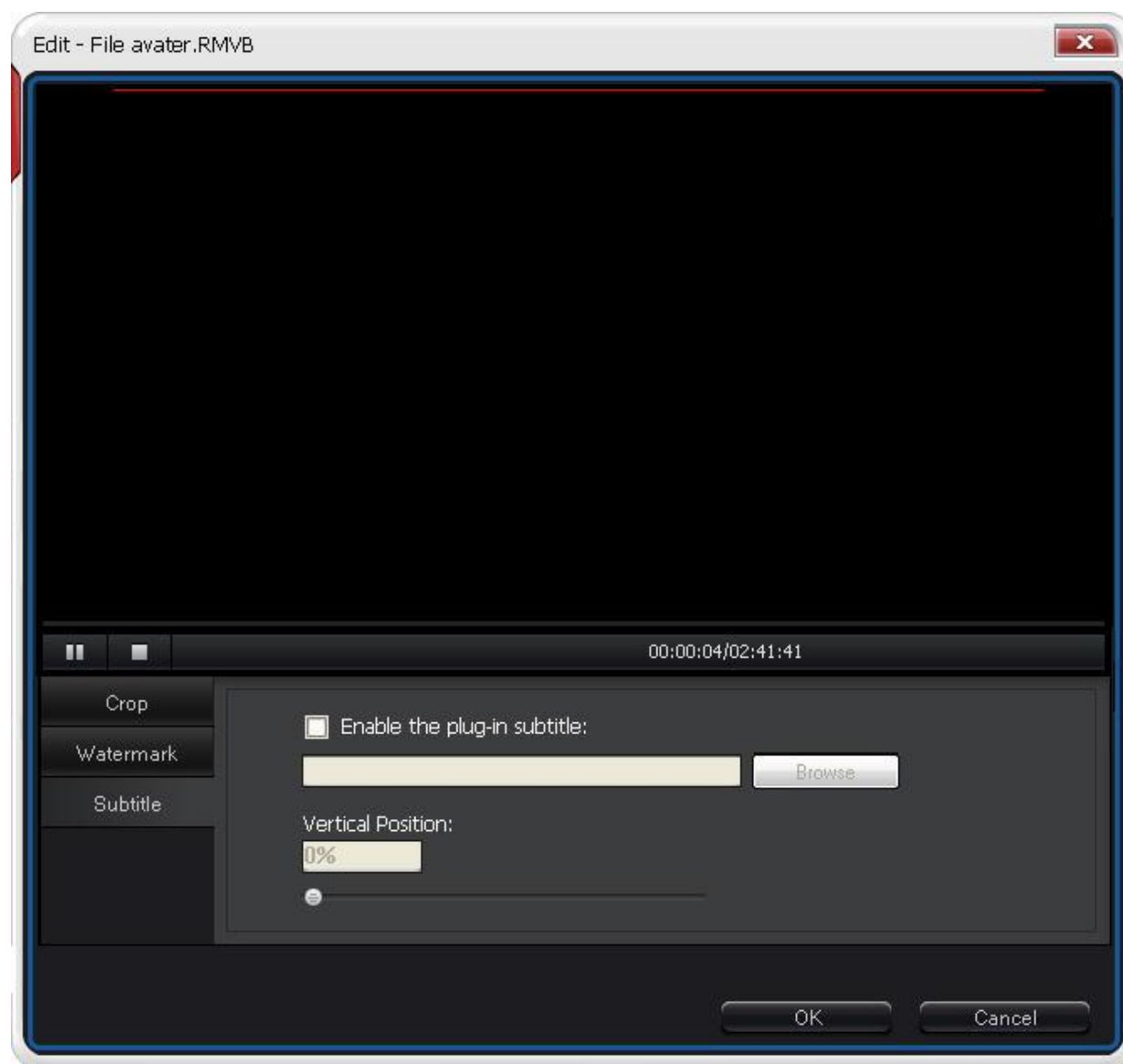
BlazeVideo, Inc.

Tel: +86-755-26509948 Fax: +86-755-26503188 Website: <http://www.blazevideo.com> Address: Room 202, Section A, Shennan Garden Building, Hi-tech Industrial Park, Nanshan District, Shenzhen, P.R.C. 518057

3.2.2.4 Insert subtitle in preferred language



Step 1: Click the “Subtitle” button in the above Edit window, or click the  on the main screen of Video Magic Ultimate, you can start to insert subtitle to your video:



Step 2: Select “Enable the plug-in subtitle” and click the Browse button to load your subtitle file.

Step 3: Drag the bar in “Vertical Position” to adjust your subtitle position.

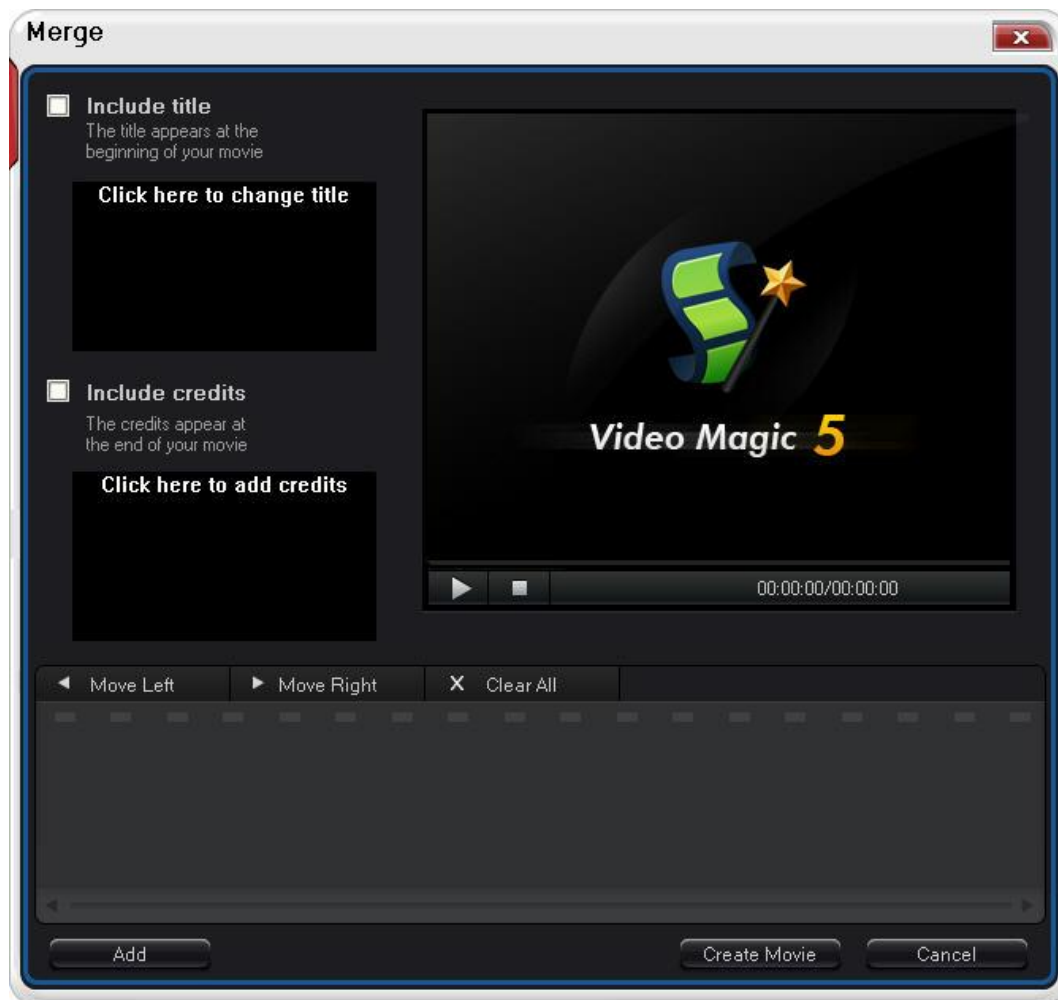
BlazeVideo, Inc.

Tel: +86-755-26509948 Fax: +86-755-26503188 Website: <http://www.blazevideo.com> Address: Room 202, Section A, Shennan Garden Building, Hi-tech Industrial Park, Nanshan District, Shenzhen, P.R.C. 518057

3.2.2.5 Merge several video files into one



Step 1: Click the button to go to Merge box:



Step 2: Use the buttons below to combine your videos.

Add: click to load your video files in various formats.

Move Left: click to move your selected video file to left.

Move Right: click to move your selected video file to right.

Clear All: click to remove all loaded video files.

BlazeVideo, Inc.

Tel: +86-755-26509948 Fax: +86-755-26503188 Website: <http://www.blazevideo.com> Address: Room 202, Section A, Shennan Garden Building, Hi-tech Industrial Park, Nanshan District, Shenzhen, P.R.C. 518057

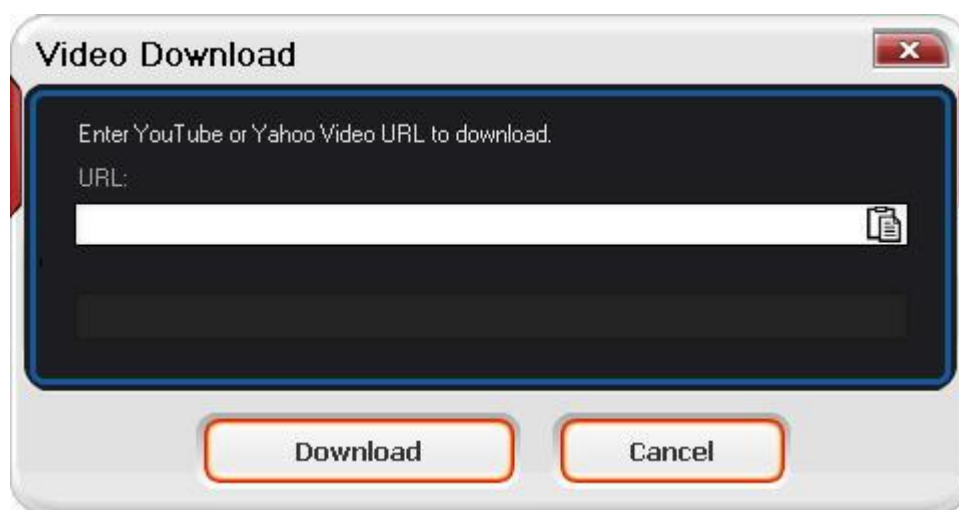
Insert Title: click to enter a title for your merged video.

Insert Credits: click to create credits on your merged video.

3.3.3 Download YouTube videos



Step 1: Click the to pop up box below:



Step 2: Copy and paste your loved video YouTube URL and click the “Download” button. Video Magic Ultimate will download the video instantly.

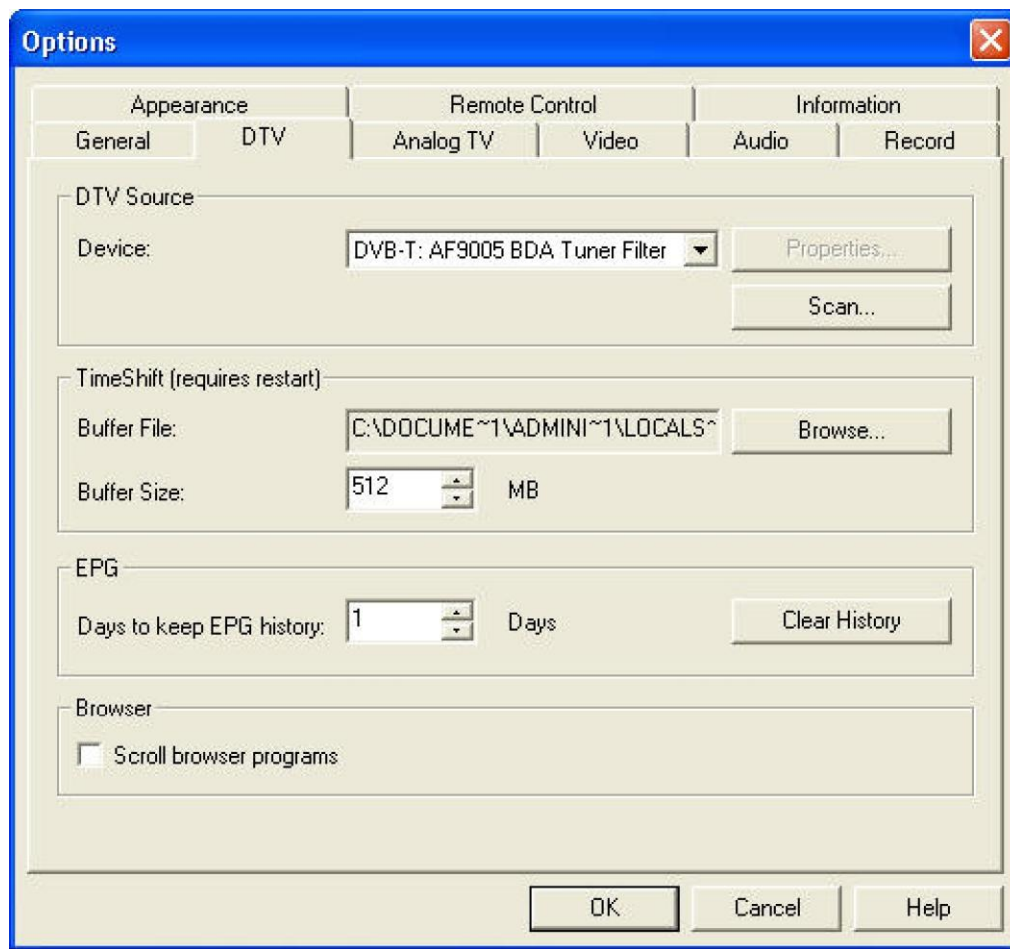
IV. Settings

Right click Video window of BlazeVideo TV Recorder, and click Options, you will open Options box for advanced setting. Below we just take DTV and Record setting as examples.

BlazeVideo, Inc.


Tel: +86-755-26509948 Fax: +86-755-26503188 Website: <http://www.blazevideo.com> Address: Room 202, Section A, Shennan Garden Building, Hi-tech Industrial Park, Nanshan District, Shenzhen, P.R.C. 518057

4.1 DTV Setting



- **Device:** If a HDTV device installed or connected to your PC, the device name will display.
- **Scan:** click to launch channel scanning
- **Buffer File:** display the directory of buffer file, please select a directory with large enough space.
- **Buffer Size:** Hard disk size for buffer and saving paused programs, the bigger size, and the longer time of saving program.

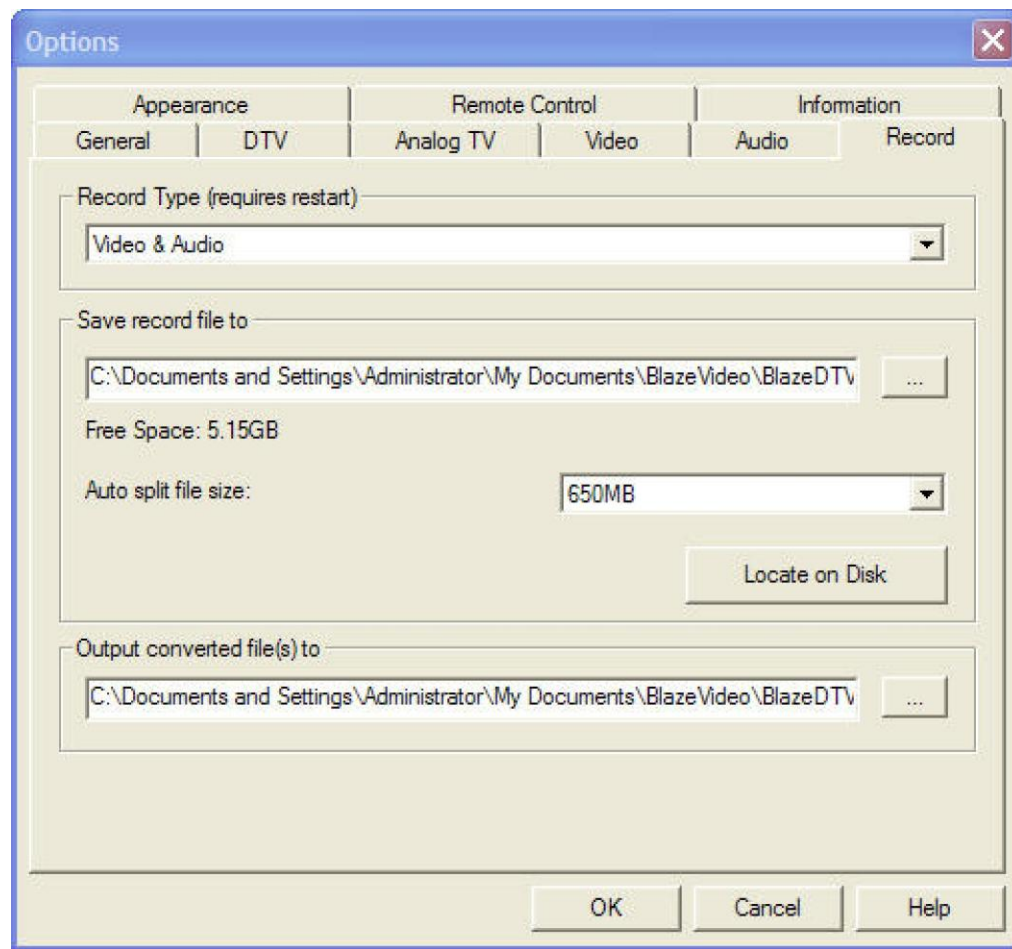
Note: After you change the buffer file or buffer size, please restart the program to activate the changes.

- **Days to keep EPG history:** Set the days to keep the EPG history, maximum 7 days to keep EPG history.
- **Clear History:** Delete the EPG history.
- **Scroll browse programs:** Selected to scroll browse programs after click 

BlazeVideo, Inc.

Tel: +86-755-26509948 Fax: +86-755-26503188 Website: <http://www.blazevideo.com> Address: Room 202, Section A, Shennan Garden Building, Hi-tech Industrial Park, Nanshan District, Shenzhen, P.R.C. 518057

4.2 Record Setting



Record Type:

- Video & Audio: record HDTV with both video and audio
- Audio only: record HDTV with audio only

Save Record File to: Specify the path to save the record file

Locate on Disk: To quickly open the record file's folder

BlazeVideo, Inc.

Tel: +86-755-26509948 Fax: +86-755-26503188 Website: <http://www.blazevideo.com> Address: Room 202, Section A, Shennan Garden Building, Hi-tech Industrial Park, Nanshan District, Shenzhen, P.R.C. 518057

V. Technical Support

5.1 Troubleshooting

How to clear the saved channel:

- Please exit the program firstly, then locate “*DVB_T.gsl*” file in program installation folder and delete it.

Fail to search channel:

- A. Expand frequency range
- b. Adjust off-center frequency
- c. Change parameter in Advanced Setting box

Fail to playback HDTV show:

- Current channel has no data stream, please research channel.

Note: Please view the clock in Main Control Panel to check: if clock change with the time, there is data stream; clock unchanged, no data stream.

Can not record some channel's program

- The channel adopts AC-3 audio encoding mode.

5.2. Contact Support

Please collect the following information and E-mail us. We will respond you as soon as possible:

- Product Order ID
- BlazeVideo TV Recorder's version number
- Windows Operating System's version
- Hardware configuration (sound card, VGA card, Image Capture card) and their specifications
- The warning message
- The time and process descriptions about your troubles.

Email: support@blazevideo.com

Web site: <http://www.blazevideo.com>

BlazeVideo, Inc.

Tel: +86-755-26509948 Fax: +86-755-26503188 Website: <http://www.blazevideo.com> Address: Room 202, Section A, Shennan Garden Building, Hi-tech Industrial Park, Nanshan District, Shenzhen, P.R.C. 518057